

Grizzly Creek Rest Area - I-70 MM 121
Elevation \approx 6,100'

CDOT Region #3



Summary Observations

An on-site ADA survey was conducted September 27, 2016, by Patrick Going, ADA Consultant. All observations are based on the *2010 ADA Standards for Accessible Design*. These Standards may be found at www.access-board.gov.

Grizzly Creek is available for both east bound and west bound travelers. It is on the west end of the popular Glenwood Canyon bike path. Grizzly Creek encompasses a half mile stretch along the south side of I-70. It has three separate parking areas. The restrooms and other amenities are only available at the parking area #3 on the west end.

In general, it is accessible to people with disabilities and is well maintained.

Parking

Parking #1 on the east end has 24 parking spaces with one accessible. Parking #2 is uphill on the north side of I-70 and has 20 spaces with one designated accessible. Parking #3 is the main parking area and has 46 spots with 2 accessible spaces. The truck and RV parking areas have approximately 12 spaces but are not lined or designated accessible.

Path-of-Travel

The route from the accessible parking spaces in parking area #3 to the restroom building and vending machines is good.

Rest Rooms

The men's and women's restrooms are accessible and have a full-size accessible toilet stall. The sink pipes should be wrapped.

Visitor Information, Vending Machines, Picnic Tables

The information displays, vending machines, and picnic tables are accessible.

Dog Relief Areas and River Access

There are numerous areas for 'dog relief'. The river is only available via a flight of stairs.



ADA Graded Summary*
***Based on 2010 ADA Standards for Accessible Design**







Excellent



Moderate



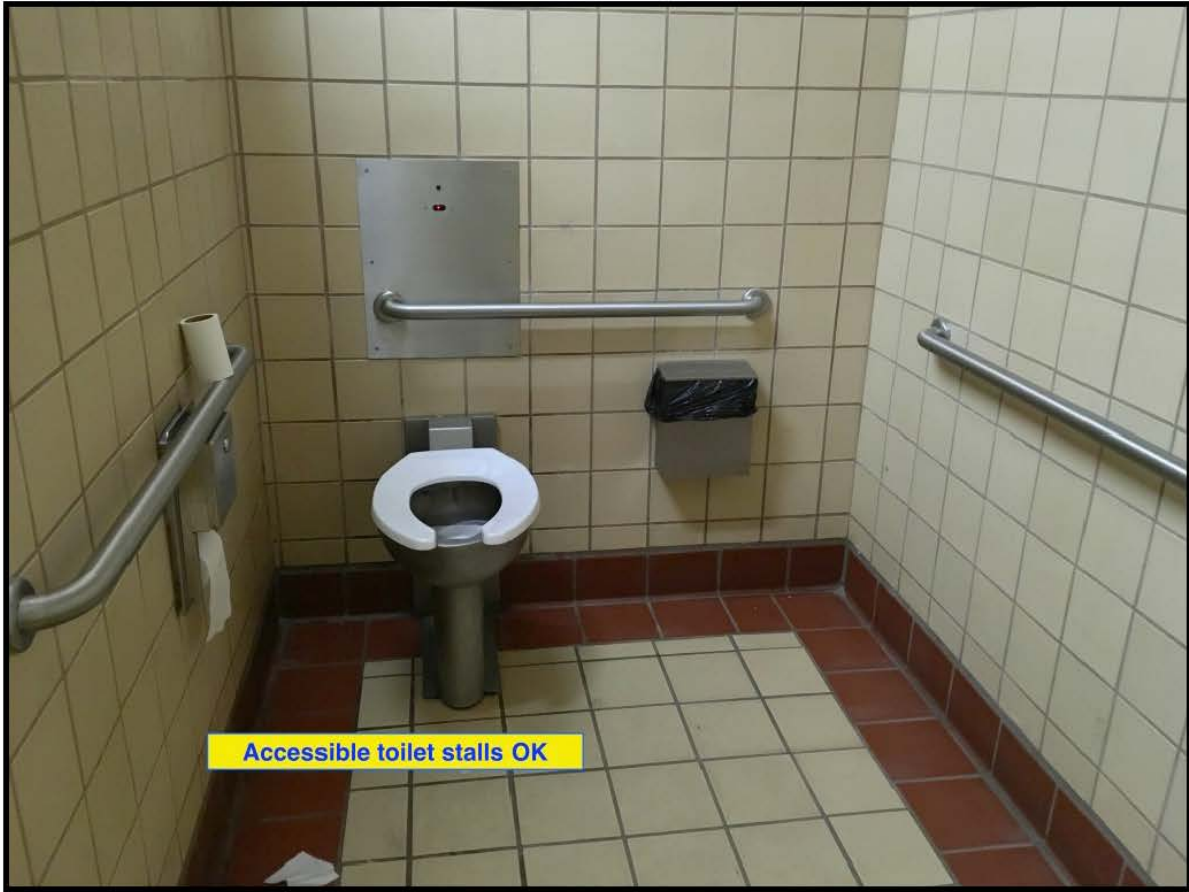
Poor

Parking 	Path-of-Travel to Building/Services 	Restrooms 	Vending/Picnic Tables 
<p>Auto - area #1 - 21 spaces/1 accessible, needs access aisle; area #2 - 20 spaces/1 accessible. Needs access aisle & vertical sign; area #3 46 spaces/2 accessible. Truck and RVs - 12 spaces/no designated accessible.</p>	<p>Paved surface, curb cuts, accessible slope to building</p>	<p>Women's & Men's good with full-size accessible toilet stall. Should wrap pipes under sinks.</p>	<p>Vending, pet relief area, picnic tables accessible.</p>

Recommendations	
Description	Priority
In parking area #1 - an access aisle is needed next to the accessible parking space.	Soon
In parking area #1 - grind down the 1.5" lip to sidewalk	Soon
In parking area #2 - the accessible parking space needs vertical sign and access aisle. Does have severe cross slope but no readily apparent solution.	Soon
In parking area #3 - paint an 8' access aisle for 'van' between the 2 designated accessible spaces. Add 2nd vertical sign.	Soon
Wrap sink pipes	Soon







Accessible toilet stalls OK





Power Assist to Open Restroom Doors





